



Friars Rise, Monkseaton, Whitley Bay

£800 PCM

 2  1  1  B

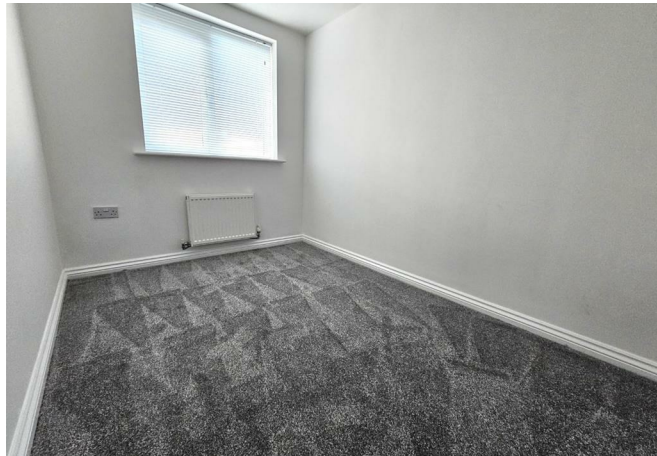
RICHARDSONS 



Friars Rise

Whitley Bay, NE25 9BA

- TOP FLOOR APARTMENT
- NEWLY FITTED BATHROOM
- SPACIOUS LOUNGE
- ALLOCATED PARKING
- NEW CARPETS THROUGHOUT
- GREAT LOCATION
- TWO BEDROOMS
- EPC RATING B



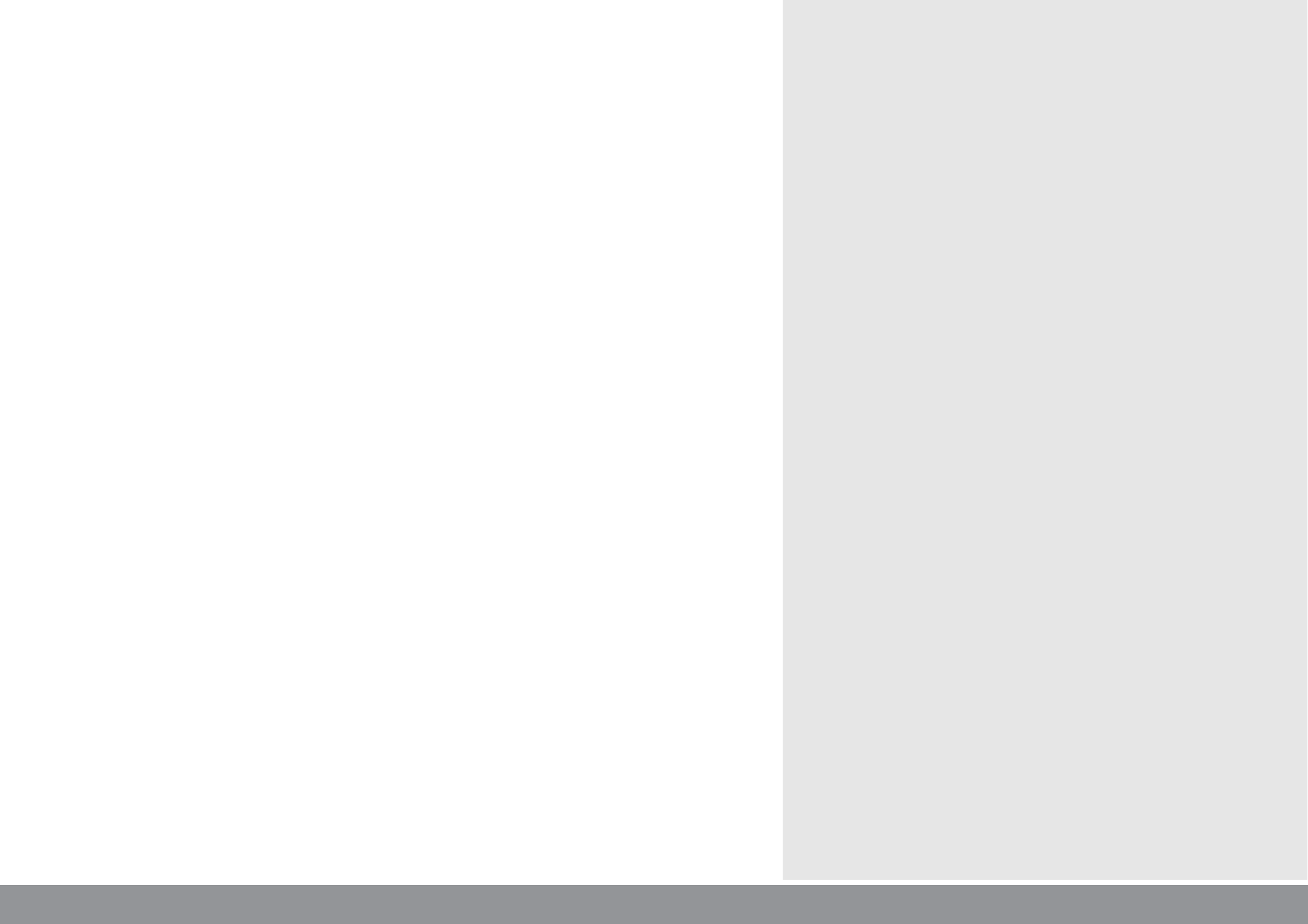
£800 PCM

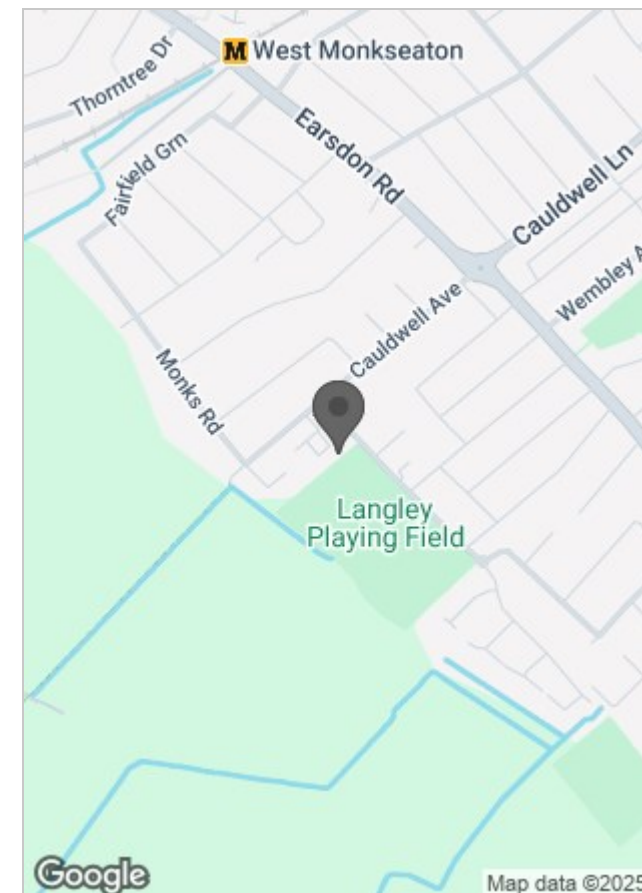


Richardsons are delighted to introduce to the market this immaculate two bedroom second floor apartment in excellent condition. Recently decorated.

Briefly comprising; secure intercom entry system through to spacious communal hallways, entrance door to private flat leading through to the hallway with doors off to the kitchen, lounge, master bedroom, second bedroom, bathroom and storage cupboard. Also benefiting from allocated parking bay and visitors parking.

Rent £800
Deposit £923
Council Tax - B





Energy Efficiency Rating		
	Current	Potential
Very energy efficient - lower running costs		
(92 plus) A		
(81-91) B	82	83
(69-80) C		
(55-68) D		
(39-54) E		
(21-38) F		
(1-20) G		
Not energy efficient - higher running costs		
England & Wales		EU Directive 2002/91/EC

Viewing

For further information or to arrange a viewing please contact our North Shields office on 01912903770

The particulars are set out as a general outline only for the guidance of intended purchasers or lessees, and do not constitute, any part of a contract. Nothing in these particulars shall be deemed to be a statement that the property is in good structural condition or otherwise nor that any of the services, appliances, equipment or facilities are in good working order. Purchasers should satisfy themselves of this prior to purchasing.